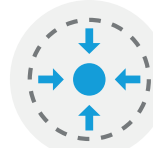


Granismart

Elegant and professional design in the smallest space

The smallest professional slush machine, it is the ideal equipment for limited spaces or low consumption of slush, sherbet or cold drinks.



Reduced Size

30% smaller than standard slush machines. Can be installed anywhere.



Stainless Steel

Robust and elegant appearance guaranteeing many years of service.



5L tank

Optimal for small spaces where the demand for slushy products is limited.



Maximum product savings

Prepares small amounts of slush and avoids unnecessary waste

- 1 PRACTICAL AND COMPACT DESIGN
- 2 OPTIONAL ENGINE FOR CREMINO
- 3 STANDBY MODE TO SAVE ENERGY
- 4 HIGHER PRODUCT ROTATION FOR A GREATER FRESHNESS

	GSM 1	GSM 2	GSM 3
Bowl Capacity	1 x 5 l	2 x 5 l	3 x 5 l
Dimensions (X x Y x Z)	26x40x63	40x40x63	60x40x63
Weight	22 Kg	33 Kg	47 Kg
Voltage	230V-50Hz	230V-50Hz	230V-50Hz
Power	300 W	560 W	700 W



available with refrigerant gas
R290

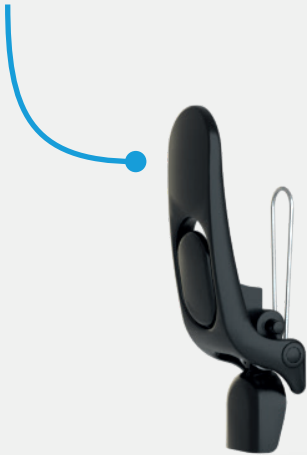


Multiply the versatility of your Granismart with the **enhanced motor** (optional, on request). **In addition to slush**, you can prepare high-density products such as **cold creams**.

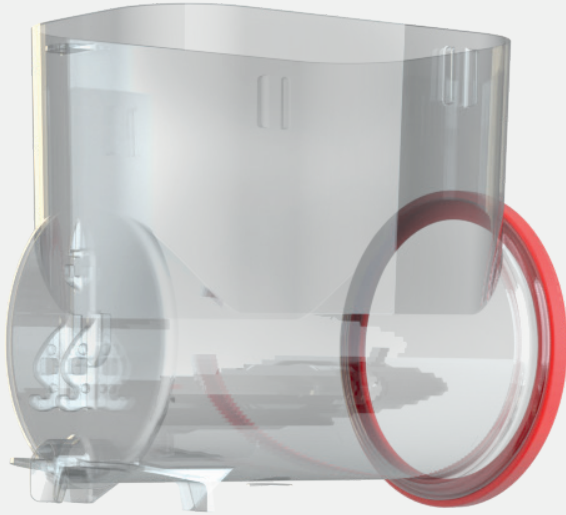
Fast & Easy Cleaning

Less parts to dismantle and clean than other slush machines. Reduces Operation time and helps you focus on what really matters; the customer

Clean the P&P tap **in 1 piece**. No disassembly required



Seal easily **fitted** on the bowl **before mounting** on the machine



Mixer seal remains on the machine when cleaning. Disassembly not required

