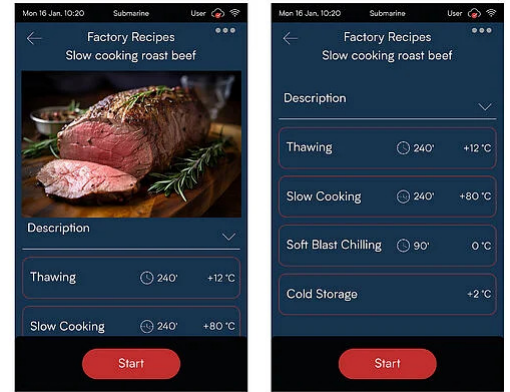




Freedom to create

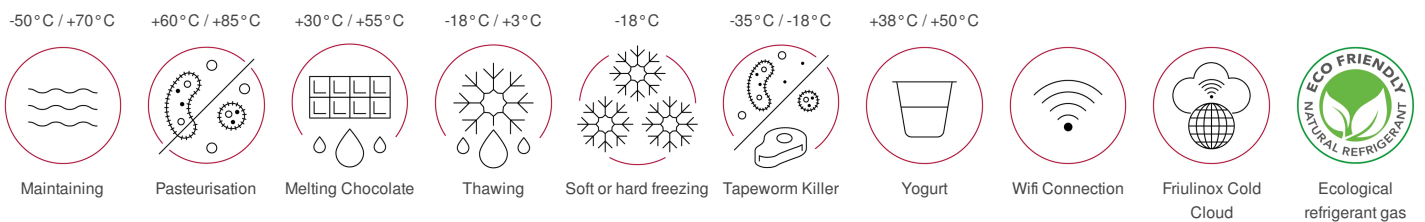
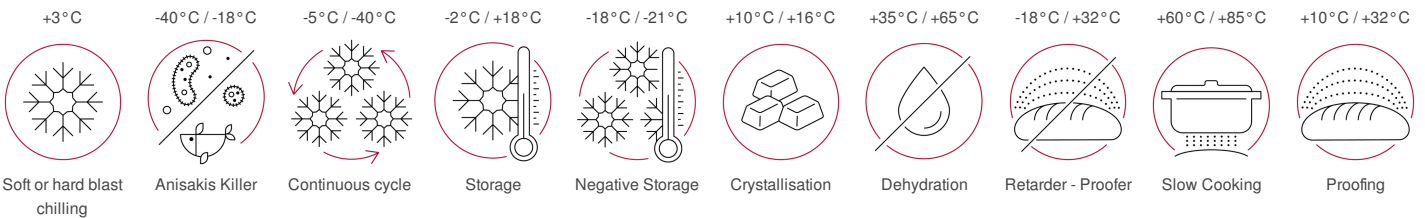
Positive and negative blast chilling, thawing, proofing and retarder-proofer, pasteurization, slow cooking, maintaining the temperature, drying...are just some of the functions that can be managed immediately and precisely, individually or by connecting them in a single flow.



Model: SBM-161-HA-R290

Submarine

SUBMARINE MULTIFUNCTION, CABINET - 16 X GN 1/1 - 16 X EN1. +85 / -40 °C - AIR CONDENSING UNIT



CE CB IPX4

CONTROL MECHANISMS

- 7" touch screen color display with control interface
- Quick-release heated core probe with 4 measuring points
- Control-activated chamber sanitisation system with active ions (HI-GIENE)
- Photo-identifiable processes
- USB connection for uploading and downloading data/recipes
- IoT connectivity as standard
- Water inlet valve.
- Alarm viewing.
- Anti-odour door lock.
- Internal fan stop by micro switch when door is opened.

STRUCTURAL CHARACTERISTICS

- External Scotch Brite satin finish stainless steel.
- High density CFC and HCFC-free PU insulation (42 kg/m³).
- Highly ventilated evaporator to ensure the cooling system's maximum efficiency
- Stainless steel internal coating with fully rounded corners
- Die-moulded and leakproof internal base
- Anti-condensation heating element located on the box under the magnetic seal stop
- Strongbox ergonomic handle
- Magnetic seal on 4 sides of the door
- Indirect-flow electric fans - made of composite material - on the product
- Side guide-supporting uprights with 18 mm-pitch holes
- Compressor-protecting automatic-reset thermal circuit breaker
- Copper-aluminium evaporating coil, cataphoresis-painted
- Copper condensing coil with high thermal efficiency aluminium fins
- Patented chamber humidity-injecting system

OPERATION

- Ethernet connection for HACCP Log download and remote service.
- Automatic storage at the end of the blast chilling cycle.
- Multilevel function.
- Drying.
- Cell pre-cooling.
- Automatic defrost cycles.
- Wi-Fi connection for HACCP Log download and remote service.

CLEANING AND MAINTENANCE

- Easy to wash and hygienic safety due to the suspended evaporator coil.
- Easy to clean in accordance with UNI EN 14159 hygiene regulations.

INSTALLATION AND ENVIRONMENT

- Quality ISO 9001 / Safety ISO 45001 / Environmental ISO 14001 certification.
- 100% recyclable packaging.

CONDENSING UNITS

- Automatic defrost and defrost water self evaporating without the use of energy.
- R290 ecological refrigerant gas

STANDARD EQUIPMENT

- UNEQUIPPED REMOVABLE GRILL-HOLDING PANELS IN AISI 304 18/10 STAINLESS STEEL, WITH DOUBLE L-SHAPED GUIDES
- USB CONNECTION FOR UPLOADS AND DOWNLOADS
- QUICK-RELEASE HEATED CORE PROBE WITH 4 MEASURING POINTS

OPTIONAL TO BE REQUESTED WHEN ORDERING

CA-161: WOODEN CRATE PACKAGING

PSX-161: LEFT HINGED DOOR

SKRT-02: WHEEL KIT WITH BRAKE

EXTRA ACCESSORIES THAT CAN BE INSTALLED FOLLOWING PURCHASE

TS-161-440-3N-60Hz-HO: 440-3N-60HZ-HO

TS-161-360-3N-60Hz-HO: 360-3N-60HZ-HO

TS-161-208-3-60Hz-HO: 208-3-60HZ-HO

Capacity

Capacity	16 x 1/1 GN - 16 x EN1		
No. of layers - h 20	28		
Distance between layers - h 20	mm	36.5	inch 1.4
No. of layers - h 40	18		
Distance between layers - h 40	mm	54.75	inch 2.2
No. of layers - h 65	14		
Distance between layers - h 65	mm	73	inch 2.9
Minimum distance between layers	mm	18.25	inch 0.7

Dimensions

Width	mm	790	inch	31.1
Depth	mm	870	inch	34.3
Height	mm	1960	inch	77.2
Packaging width	mm	830	inch	32.7
Packing depth	mm	970	inch	38.2
Packaging height	mm	2110	inch	83.1
Net weight	kg	210	lbs	463.1
Gross weight	kg	250	lbs	551.3
Volume	m ³	1.3	ft ³	45.9
Packing volume	m ³	1.7	ft ³	60.0
Useful Inner Width	mm	670	inch	26.4
Door height	mm	1130	inch	44.5
Inner depth	mm	450	inch	17.7
PU insulation - Thickness	mm	60	inch	2.4

Technical Data

Working temperature	°C	+85 °C / -40 °C	°F	NaN
Motor	Air-cooled condensing unit			
PU insulation - Thickness	mm	60	inch	2.4
Climate class	5			
GWP - Global Warming Potential	3			
Refrigerant - Type	R290			
Refrigerant - Quantity	g	2x150	g	

Power supply

Power supply voltage	3N-AC 400 V			
Electrical absorption	A	26.73		
Frequency	Hz	50		
Total electric power	kW	4.981		
Cooling power	kW	2,690		
Heating power	kW	1.5		

Blast chilling

Blast Chilling Capacity in 90' +90 / +3 °C	kg	90	lbs	198.5
Freezing Capacity in 240' +90 / -18 °C	kg	60	lbs	132.3
Blast Chilling Capacity in 120' +65 / +10 °C - BC standard EN17032	kg	80	lbs	176.4
Freezing Capacity in 270' +65 / -18 °C	kg	50	lbs	110.3
Blast Chilling cycle time - BC standard EN17032	min	108		
Freezing cycle time - BF standard EN17032	min	270		
Blast Chilling energy consumed - BC standard EN17032	kW h / kg	0.075		
Freezing cycle energy consumed - BF standard EN17032	kW h / kg	0.25		

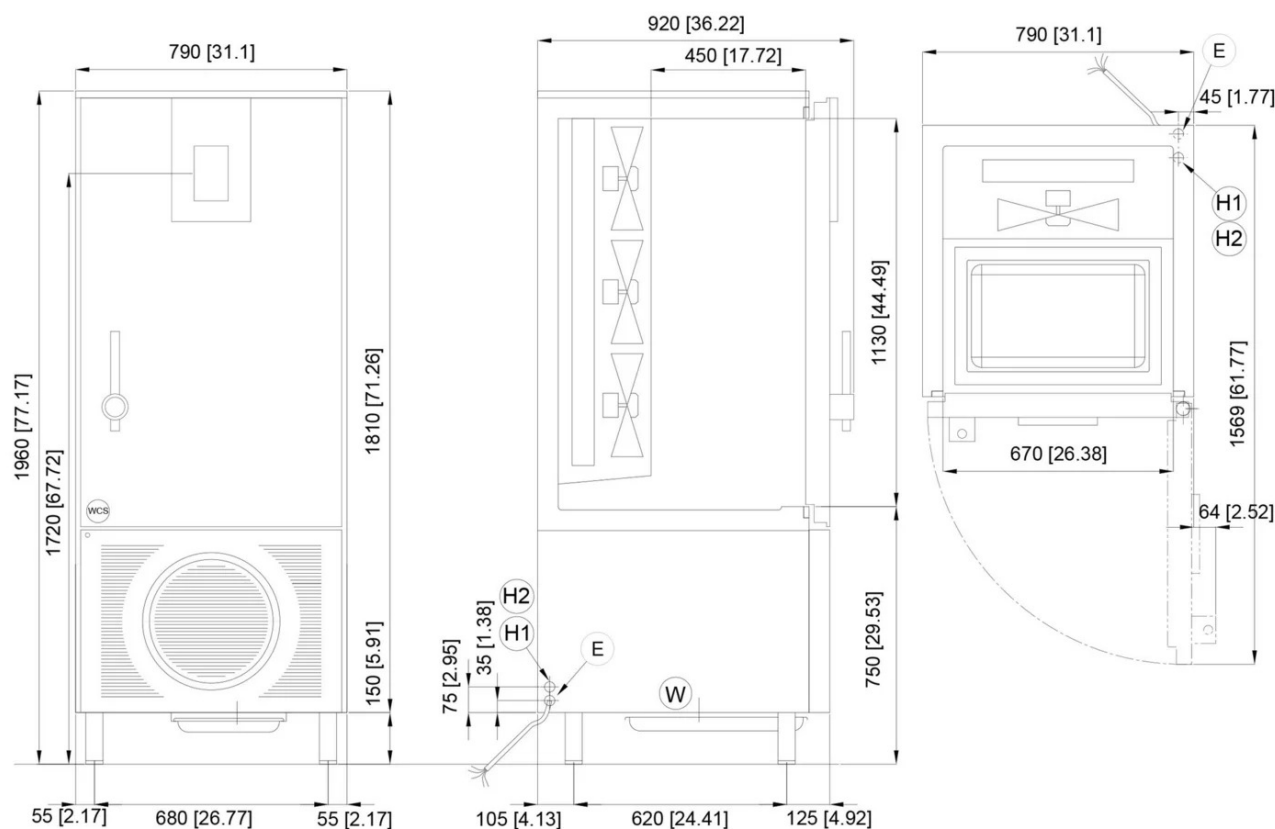
Water Connection

Discharge - ø	mm	57	inch	2.2
---------------	----	----	------	-----

Emissions

Noisiness	db	< 70
-----------	----	------

* BT - Evap. temp. -25°C / Cond. temp. +45°C.



DIMENSIONI mm
DIMENSIONS [in]

- Ⓔ CONNESSIONE ELETTRICA
ELECTRICAL CONNECTION
- Ⓦ CONNESSIONE SCARICO OPZIONALE
OPTIONAL DRAIN CONNECTION
- Ⓜ1 CONNESSIONE INGRESSO H2O 1/2"
INLET WATER CONNECTION 1/2"
- Ⓜ2 CONNESSIONE USCITA H2O 1/2"
EXHAUST WATER CONNECTION 1/2"
- ⓌCS CONNESSIONE OPZIONALE PER DOCCETTA ESTERNA
CONNECTION OPTIONAL FOR HAND SHOWER